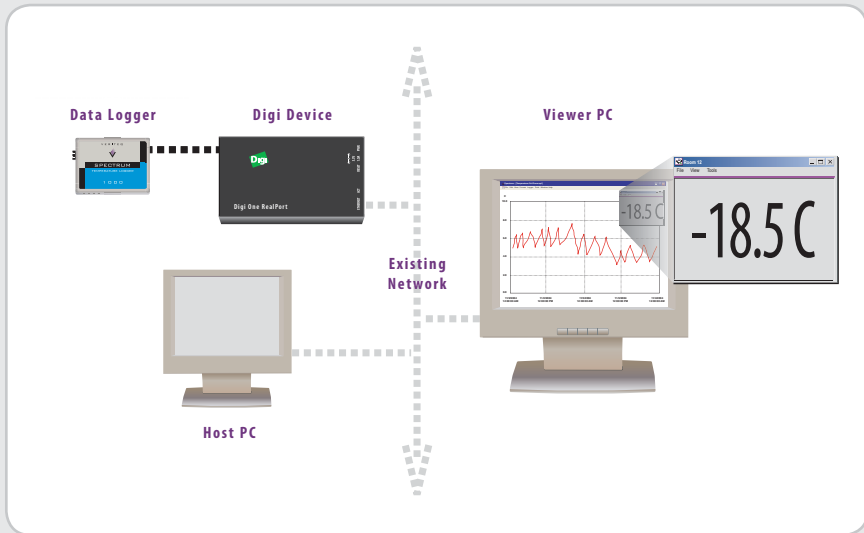




# QUICKSTART GUIDE

for Veriteq viewLinc with Digi devices

## VERITEQ viewLinc OVERVIEW DIAGRAM



### Required Pieces

- > Digi device (note: serial cable packaged with Digi device is not required for Veriteq system)
- > Digi CD (Part No. 40002255\_J)
- > Veriteq Digi cable (INT-CT5-DL or INT-DIGI-DL)
- > Veriteq Data Logger (may also include external probe)
- > Veriteq viewLinc CD (for Real-Time Viewing, Alarming, and Automated-Downloading)
- > Veriteq Spectrum CD (for Graphing and Data Logger setup)
- > Veriteq viewLinc User's Guide

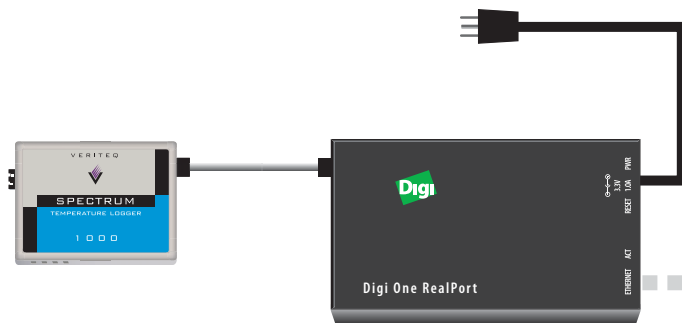
### FREE VERITEQ TECH-SUPPORT:

1-866-861-3388 (8am-4pm Pacific Standard Time) Email [techsupport@veriteq.com](mailto:techsupport@veriteq.com)

# STEP 1

## CONNECT DIGI DEVICE

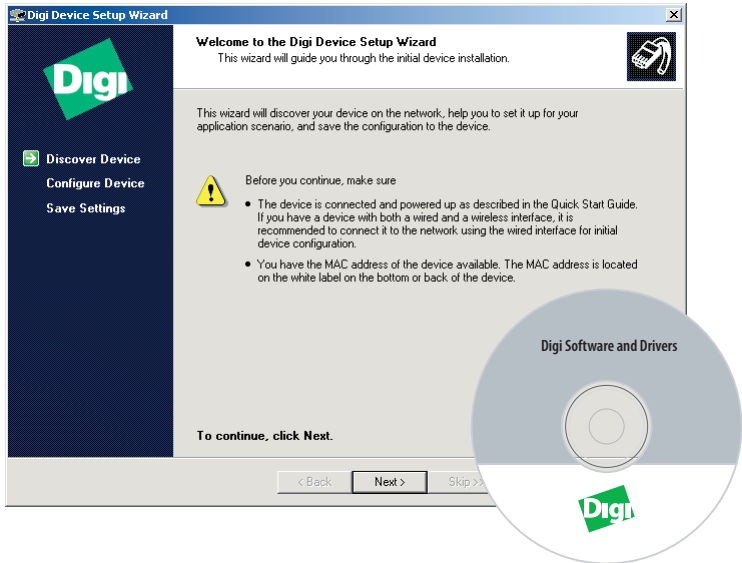
- > Connect Digi to power supply and Ethernet outlet;
- > Connect data logger to Digi device using Veriteq cable.



## STEP 2

### DISCOVER DIGI DEVICE

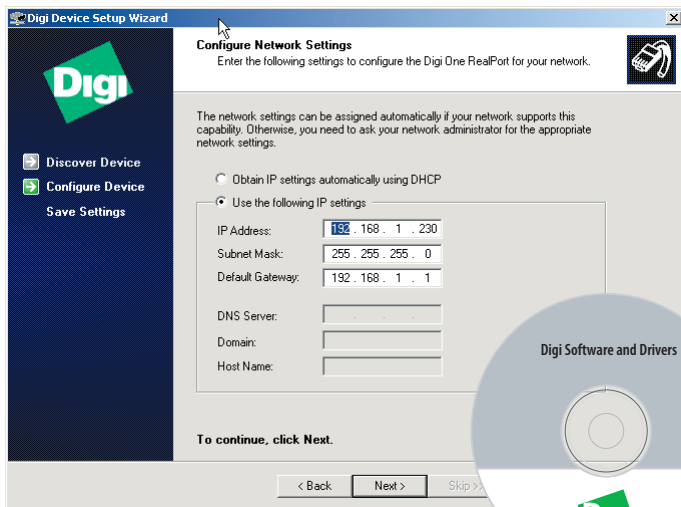
- > Insert Digi CD into "Host" PC (this can be any Windows PC or Server)
- > Digi Setup Wizard should begin automatically; next
- > Select device that matches the MAC address from bottom of Digi device; next



# STEP 3

## CONFIGURE DIGI DEVICE

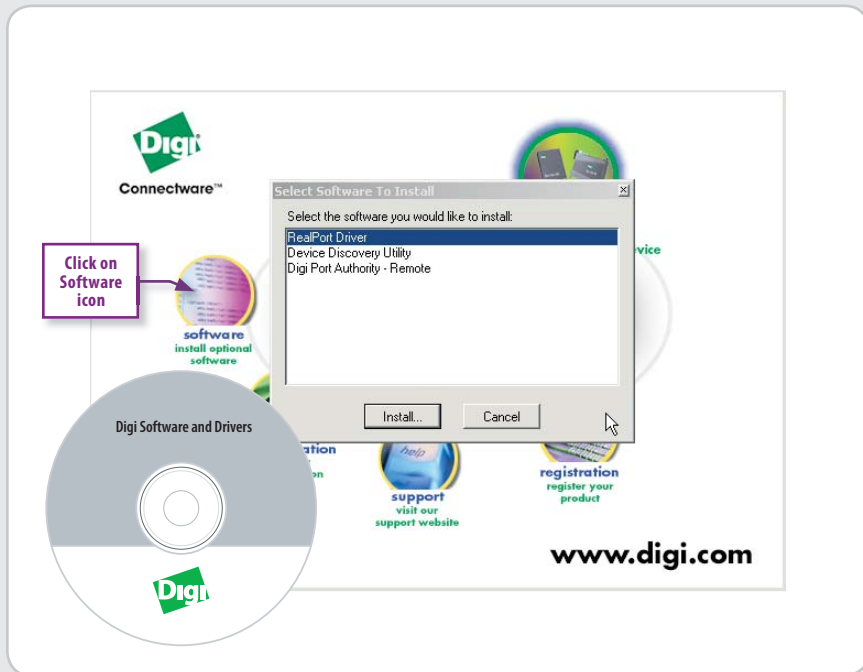
- > Enter a static IP address (provided by your IT dept)
- > Next; next; next; finish



# STEP 4

## INSTALL DIGI DRIVER

- > Click on software icon
- > Select RealPort driver; Install
- > Choose add a new device; next
- > Screen may say <device not listed> . . . that is ok; next

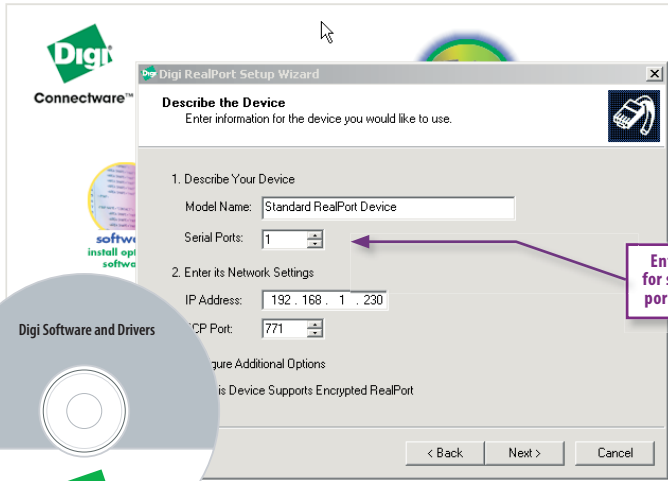


# STEP 5

## IDENTIFY NUMBER OF PORTS ON DIGI DEVICE

- > Enter number of ports of Digi device (i.e. "1" for single port Digi)
- > Enter IP address; next

IMPORTANT: Record virtual COM port assigned to device



Repeat Steps 1-5 for additional Digi devices

## STEP 6

### SET REALPORT CONFIGURATION ON DIGI DEVICE

- > This step is only required if you did not purchase the Digi device from Veriteq, or if you have reset the Digi device.
- > If applicable, download instructions at [www.veriteq.com/tech](http://www.veriteq.com/tech)

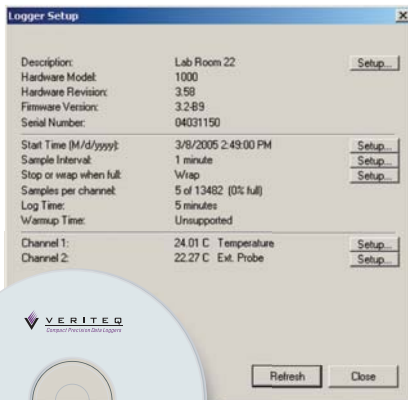
**Step 6 has already been performed on all  
Digi devices purchased from Veriteq**

**Proceed to Step 7**

## STEP 7

### INSTALL Spectrum SOFTWARE on Host PC

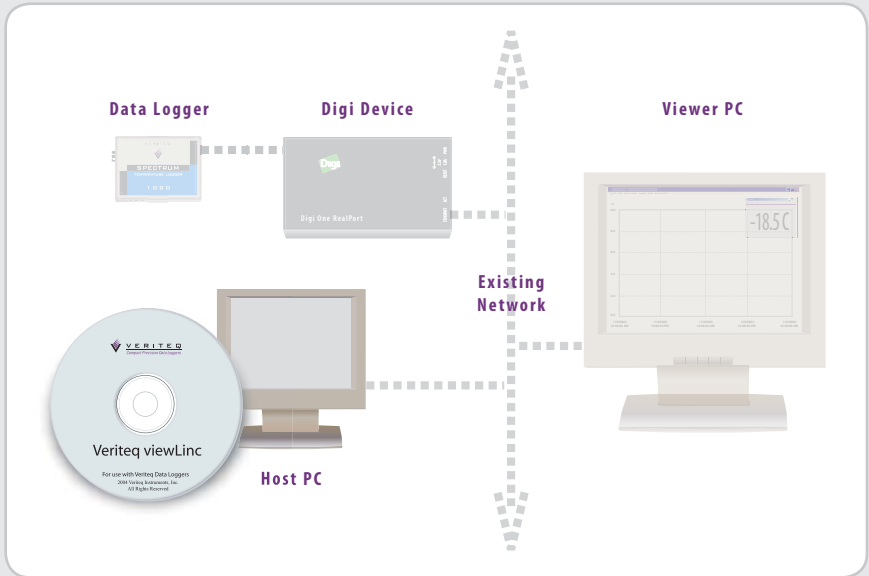
- > Install Spectrum from CD
- > Start software and select Tools/Options to choose the appropriate COM port; click OK
- > Select Logger/Setup. Seeing the Logger Setup screen (shown below) confirms successful communication with data logger.
- > At this point you may also wish to change the data logger description to match its location (ex. Lab Room 22)
- > Close logger setup
- > For detailed help on Spectrum press F1 while Spectrum software is open



# STEP 8

## INSTALL viewLinc Host SOFTWARE on Host PC

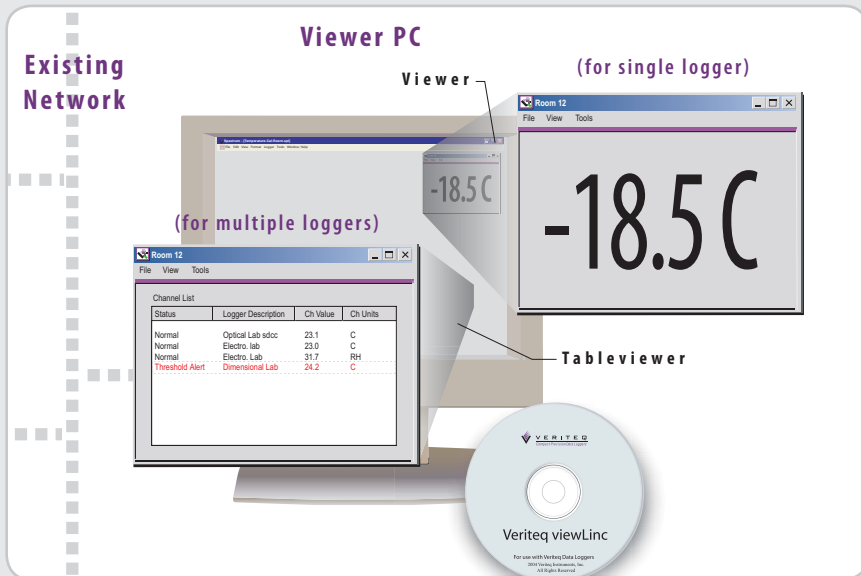
- > Every data logger must be “hosted”. This makes the loggers available across the network
- > Install viewLinc Host from CD
- > Start software and run viewLinc Host Wizard (tools menu)
- > Select COM ports (tools menu); click check box / ok
- > Share channels using check boxes ( each data logger may have multiple channels)
- > For detailed help see viewLinc User’s Guide



# STEP 9

## INSTALL CHOICE OF "VIEWING" SOFTWARE for End User

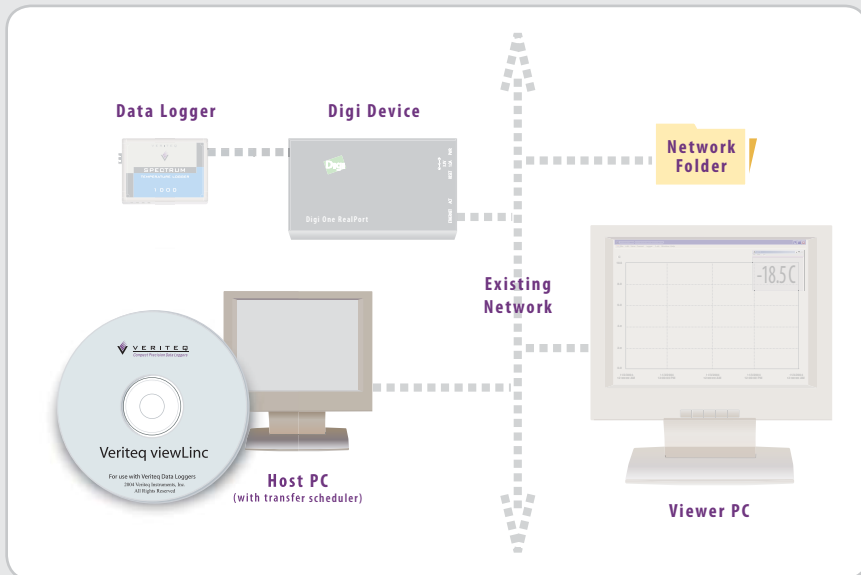
- > The End-User has two choices of viewing software (shown below)
  - TableViewer (for viewing multiple data loggers) or Viewer (for viewing a single data logger)
- > Install choice of software on any PC (or install both)
- > Start software and run Wizard (tools menu)
- > For "TableViewer" next step is to select channels (tools menu)
- > For "Viewer" next step is to create view, and then select channels
- > You will notice that each data logger may have multiple channels
- > For detailed help, including alarm-settings, see viewLinc User's Guide



# STEP 10

## INSTALL TransferScheduler on Host PC

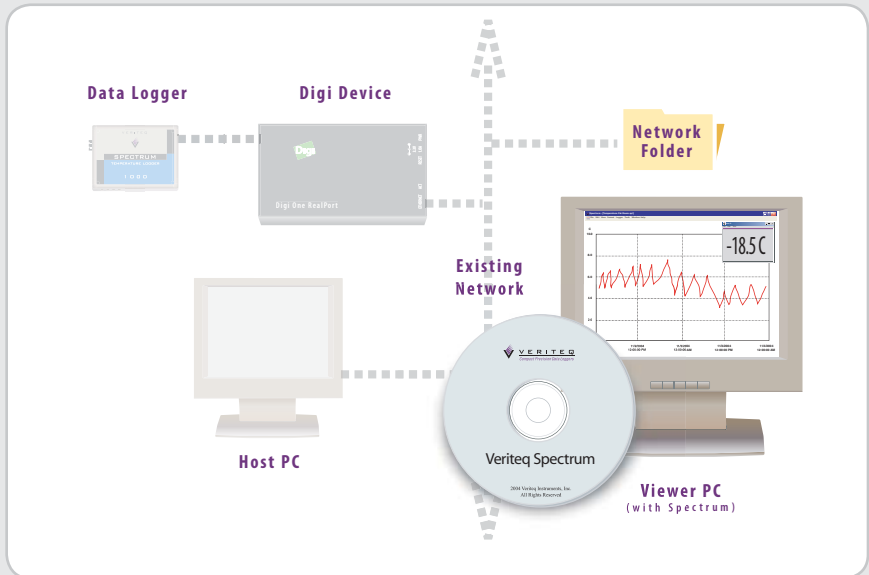
- > This program is for automated downloading of data logger files
- > Data logger files are saved in a proprietary format (file name ending in ".spl"). Step #11 will explain opening the files.
- > Install TransferScheduler from CD
- > Start software and run Wizard (tools menu)
- > Specify Transfer destination folder (tools/options/logger file folder). You can choose a network folder so others will have access to the files. See viewLinc User's Guide; Transfer Scheduler; "Saving logger files to a shared network folder".
- > Select Transfer / Schedule Transfer / Select logger / ok
- > Select "New" and Schedule Task "Once" from dropdown menu to perform a test transfer



# STEP 11

## USING Spectrum SOFTWARE TO CREATE A GRAPH

- > Spectrum software is used to create a graph from historical ".spl" files
- > Install Spectrum software on Viewer PC
- > Open Spectrum and choose File / Insert Logger files; point to the folder containing ".spl" files... highlight the file and open. This is the logger file folder you specified in Step #10.
- > Choose Format / Time Scale to zoom into a specific time period of the graph
- > Choose File / Save to save your graph. Note that the file name now ends with ".spg"
- > Choose View / Logger files if you wish to view data in tabular form



CONGRATULATIONS...INSTALLATION & SOFTWARE INTRODUCTION IS COMPLETE!