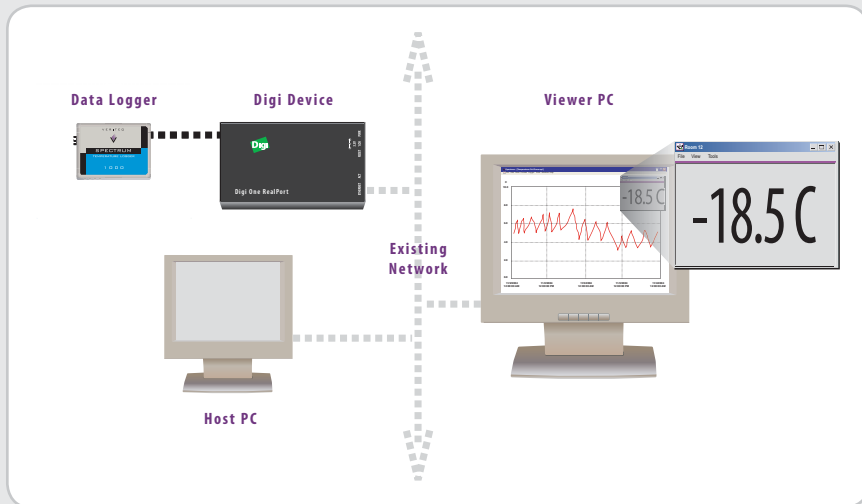




QUICKSTART GUIDE

for Veriteq viewLinc with Digi devices and VL-Series data loggers

VERITEQ viewLinc OVERVIEW DIAGRAM



- > Digi device (note: serial cable packaged with Digi device is not required for Veriteq system)
- > Digi CD (Part No. 40002255_1)
- > Veriteq Digi cable (INT-CT5-DL or INT-DIGI-DL)
- > Veriteq Data Logger (may also include external probe)
- > Veriteq viewLinc CD (for Real-Time Viewing and Alarming)
- > Veriteq vLog CD (for 21CFR Part II Compliant data logging)
- > Veriteq viewLinc User's Guide

Required Pieces

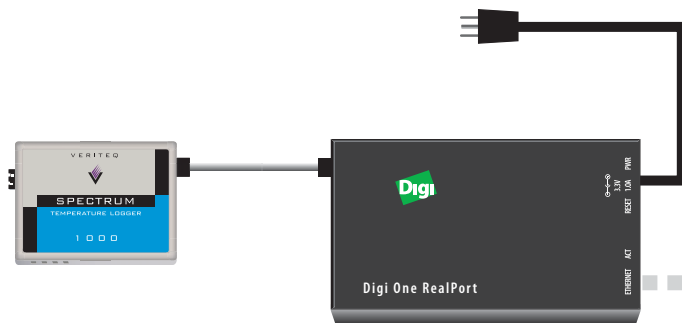
FREE VERITEQ TECH-SUPPORT:

1-866-861-3388 (8am-4pm Pacific Standard Time) Email techsupport@veriteq.com

STEP 1

CONNECT DIGI DEVICE

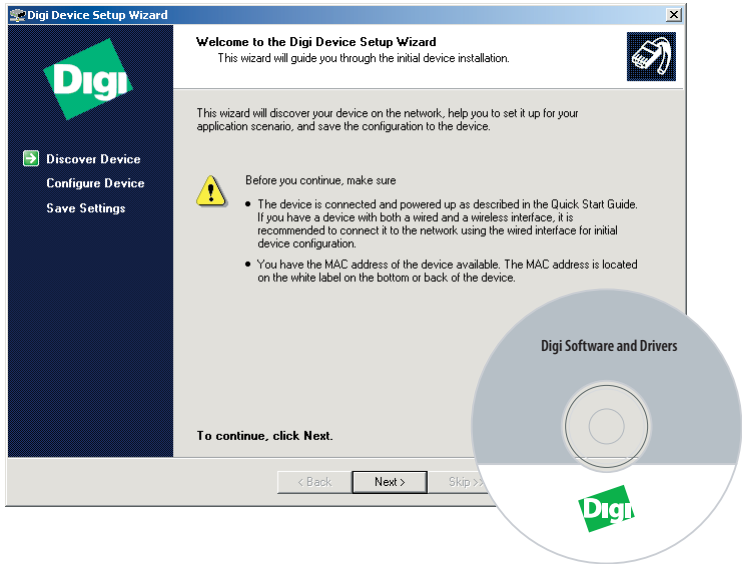
- > Connect Digi to power supply and Ethernet outlet;
- > Connect data logger to Digi device using Veriteq cable.



STEP 2

DISCOVER DIGI DEVICE

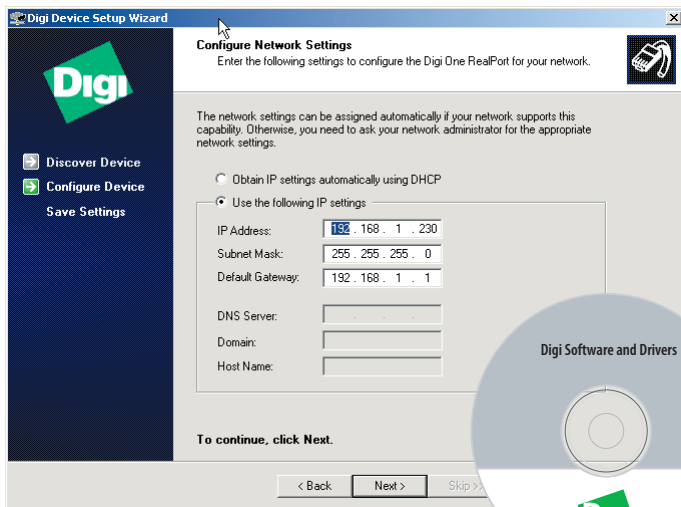
- > Insert Digi CD into "Host" PC (this can be any Windows PC or Server)
- > Digi Setup Wizard should begin automatically; next
- > Select device that matches the MAC address from bottom of Digi device; next



STEP 3

CONFIGURE DIGI DEVICE

- > Enter a static IP address (provided by your IT dept)
- > Next; next; next; finish



STEP 4

INSTALL DIGI DRIVER

- > Click on software icon
- > Select RealPort driver; Install
- > Choose add a new device; next
- > Screen may say <device not listed> . . . that is ok; next

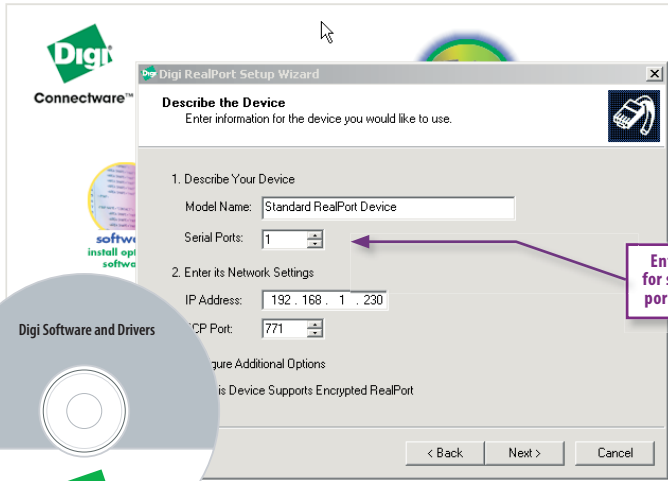


STEP 5

IDENTIFY NUMBER OF PORTS ON DIGI DEVICE

- > Enter number of ports of Digi device (i.e. "1" for single port Digi)
- > Enter IP address; next

IMPORTANT: Record virtual COM port assigned to device



Repeat Steps 1-5 for additional Digi devices

STEP 6

SET REALPORT CONFIGURATION ON DIGI DEVICE

- > This step is only required if you did not purchase the Digi device from Veriteq, or if you have reset the Digi device.
- > If applicable, download instructions at www.veriteq.com/tech

**Step 6 has already been performed on all
Digi devices purchased from Veriteq**

Proceed to Step 7

STEP 7

INSTALL vLog SOFTWARE on Host PC

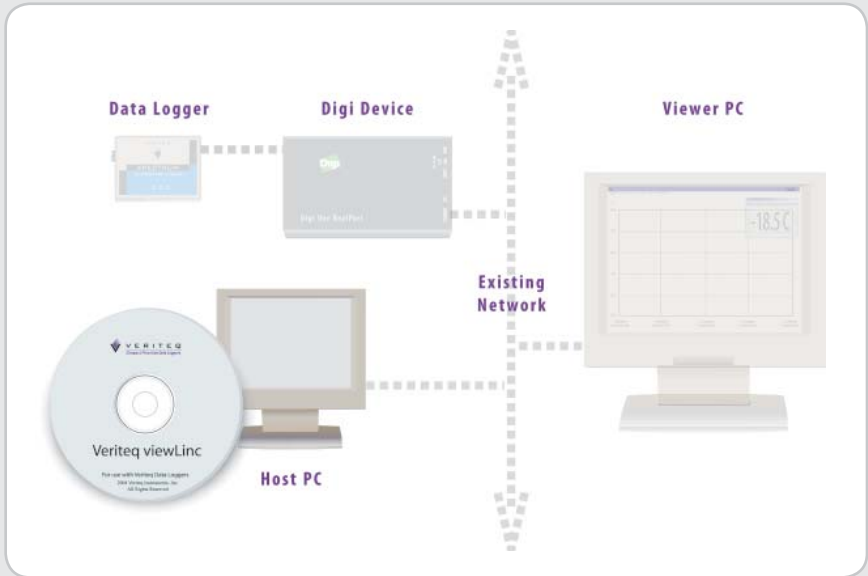
- > Install vLog from CD
- > Start software and select Tools/Options to choose the appropriate COM port; click OK
- > Select Logger/Setup. Seeing the Logger Setup screen (shown below) confirms successful communication with data logger.
- > At this point you may also wish to change the data logger description to match its location (ex. Lab Room 22)
- > Close logger setup
- > For detailed help on vLog press F1 while vLog software is open



STEP 8

INSTALL viewLinc Host SOFTWARE on Host PC

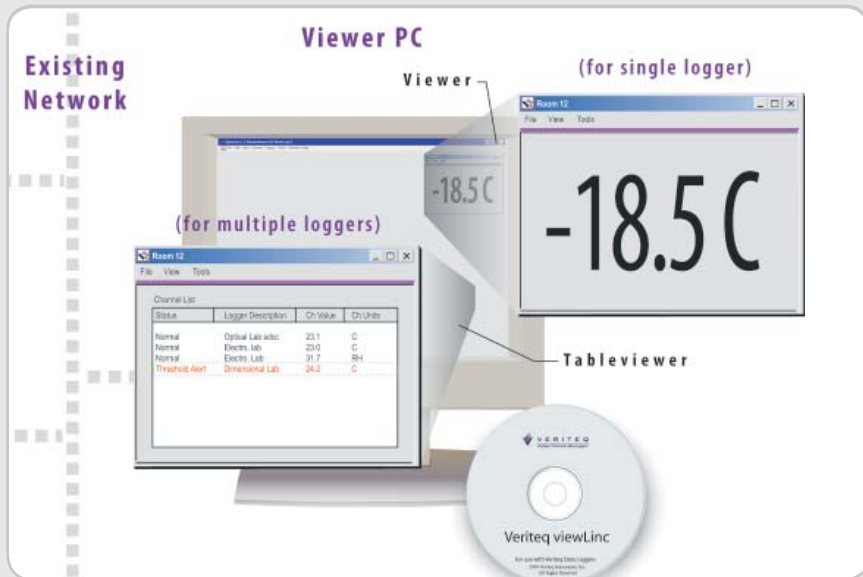
- > Every data logger must be "hosted". This makes the loggers available across the network
- > Install viewLinc Host from CD
- > Start software and run viewLinc Host Wizard (tools menu)
- > Select COM ports (tools menu); click check box / ok
- > Share channels using check boxes (each data logger may have multiple channels)
- > For detailed help see viewLinc User's Guide



STEP 9

INSTALL CHOICE OF "VIEWING" SOFTWARE for End User

- > The End-User has two choices of viewing software (shown below)
 - TableViewer (for viewing multiple data loggers) or Viewer (for viewing a single data logger)
- > Install choice of software on any PC (or install both)
- > Start software and run Wizard (tools menu)
- > For "TableViewer" next step is to select channels (tools menu)
- > For "Viewer" next step is to create view, and then select channels
- > You will notice that each data logger may have multiple channels
- > For detailed help, including alarm-settings, see viewLinc User's Guide



STEP 10

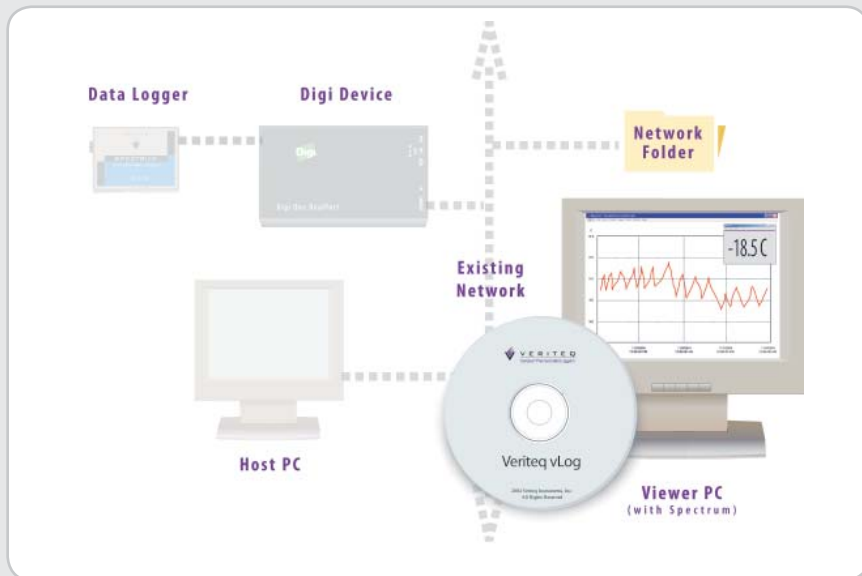
TransferScheduler

- > You will notice a program called TransferScheduler on the viewLinc CD. This program is not compatible with VL-Series data loggers so there is no need to install it. VL-Series data loggers are 21 CFR Part II Compliant and must be downloaded manually. Proceed to step 11.

STEP 11

USING vLog SOFTWARE TO download and CREATE A GRAPH

- > Start vLog software from Host PC
- > Select Tools/Options to choose the appropriate COM port; click OK
- > Select Logger/Transfer to download the data logger ".spl" file, follow instructions... say "yes" to insert file into graph
- > Choose Format / Time Scale to zoom into a specific time period of the graph
- > Choose File / Save to save your graph. Note that the file name now ends with ".spg"
- > Choose View / Logger files if you wish to view data in tabular form



CONGRATULATIONS...INSTALLATION & SOFTWARE INTRODUCTION IS COMPLETE!