

# Data Logger Analysis Software

Veriteq Spectrum Software

## Summary of Features

### Detailed graphical and tabular analysis

- overlay graphs to highlight relationships between data logger files
- zoom-in for a closer, more detailed look
- use the graph cursor to pinpoint exact values, times and dates
- set up multiple graph windows for comparative studies
- display statistical summaries
- list readings in tabular format with dates, times and logged values
- examine trends in detail with the Scroll Graph function

### Flexible graph scaling

- manual and automatically-scaled graphs save time
- set up multiple Y-axes scaling and ranges
- selectable decimal place precision

### Transfer data easily to other programs

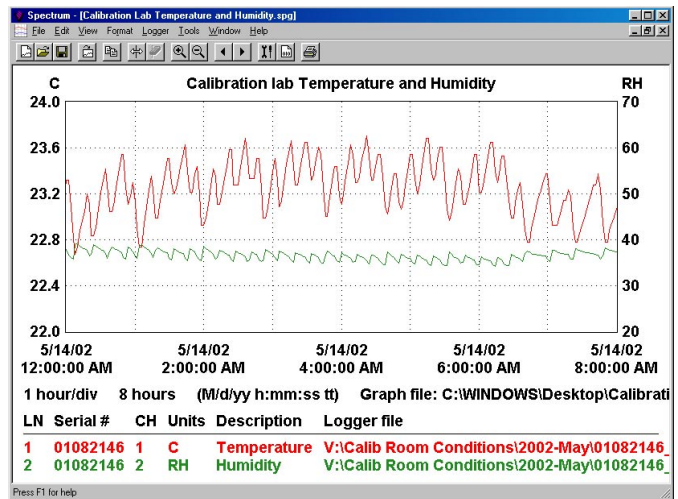
- copy and paste graphs or export ASCII files for use with other Windows programs (spreadsheets, databases, etc.)

### Fast and reliable data logger communications

- quick and convenient downloading of logger data via serial, USB or through ethernet network
- automatic file creation and descriptive naming

### Easy data logger configuration

- adjust sample rates to suit your application needs
- set up a Time Trigger for delayed start field applications
- enable and disable channels
- scale recorded data into user-defined units



Veriteq Spectrum Software is a powerful and easy-to-use package for configuring, downloading, displaying, analyzing and reporting information from any Spectrum data loggers.

Simple to setup and learn, the package provides essential data acquisition capabilities designed to get your systems up and running quickly. You'll be able to communicate with your data loggers and create detailed graphs, charts and printouts - with just a few mouse clicks. You'll also be able to export data to your favorite spreadsheets or database programs for further in-depth analysis or processing.

### Computer Requirements

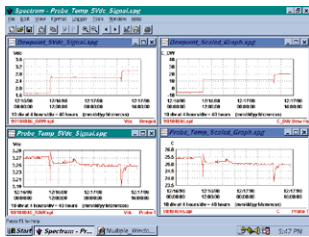
- PC with MS Windows 95, 98, ME, 2000, NT4.0, or XP
- One available serial or USB port (for data logger communications)

### Ordering Guide

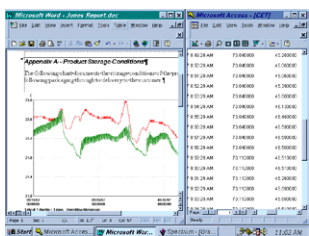
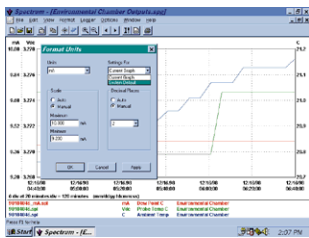
Product #	Description
PC-SFW	Veriteq Spectrum Software
<b>PC Interface Options</b>	
PC-IC	Serial Port Logger Interface Cable
PC-USB-DL	USB Port Logger Cable

### Free Trial Software

A free trial version of SPECTRUM Software is available for download at [www.veriteq.com](http://www.veriteq.com).



File Name	File Size	File Date
C:\SPECTRUM\Demover1.sp	1154-B	05/14/02
C:\SPECTRUM\Demover2.sp	1154-B	05/14/02
C:\SPECTRUM\Demover3.sp	1154-B	05/14/02
C:\SPECTRUM\Demover4.sp	1154-B	05/14/02
C:\SPECTRUM\Demover5.sp	1154-B	05/14/02
C:\SPECTRUM\Demover6.sp	1154-B	05/14/02
C:\SPECTRUM\Demover7.sp	1154-B	05/14/02
C:\SPECTRUM\Demover8.sp	1154-B	05/14/02
C:\SPECTRUM\Demover9.sp	1154-B	05/14/02
C:\SPECTRUM\Demover10.sp	1154-B	05/14/02
C:\SPECTRUM\Demover11.sp	1154-B	05/14/02
C:\SPECTRUM\Demover12.sp	1154-B	05/14/02
C:\SPECTRUM\Demover13.sp	1154-B	05/14/02
C:\SPECTRUM\Demover14.sp	1154-B	05/14/02
C:\SPECTRUM\Demover15.sp	1154-B	05/14/02
C:\SPECTRUM\Demover16.sp	1154-B	05/14/02
C:\SPECTRUM\Demover17.sp	1154-B	05/14/02
C:\SPECTRUM\Demover18.sp	1154-B	05/14/02
C:\SPECTRUM\Demover19.sp	1154-B	05/14/02
C:\SPECTRUM\Demover20.sp	1154-B	05/14/02



Field	Value
File Name	Product Test
Hardware Model	4000
Hardware Revision	4.02
Firmware Version	3.052a
Serial Number	9810436
Start Time (MM/DD/YY)	12/15/98 13:42:00
Sample Interval	5 min
Stop on response full	Yes
Samples per channel	4000 at 7500 255148
Log Time	13 days 21 hrs 50 mins
Channel 1	Enabled
Channel 2	Disabled
Channel 3	Enabled
Channel 4	Disabled
Channel 5	18.91 C - Temperature

Date	Time	Temperature	Humidity
5/14/02	12:00:00 AM	22.8	40
5/14/02	12:05:00 AM	23.2	45
5/14/02	12:10:00 AM	22.8	40
5/14/02	12:15:00 AM	23.6	50
5/14/02	12:20:00 AM	22.8	40
5/14/02	12:25:00 AM	23.2	45
5/14/02	12:30:00 AM	22.8	40
5/14/02	12:35:00 AM	23.6	50
5/14/02	12:40:00 AM	22.8	40
5/14/02	12:45:00 AM	23.2	45
5/14/02	12:50:00 AM	22.8	40
5/14/02	12:55:00 AM	23.6	50
5/14/02	1:00:00 AM	22.8	40
5/14/02	1:05:00 AM	23.2	45
5/14/02	1:10:00 AM	22.8	40
5/14/02	1:15:00 AM	23.6	50
5/14/02	1:20:00 AM	22.8	40
5/14/02	1:25:00 AM	23.2	45
5/14/02	1:30:00 AM	22.8	40
5/14/02	1:35:00 AM	23.6	50
5/14/02	1:40:00 AM	22.8	40
5/14/02	1:45:00 AM	23.2	45
5/14/02	1:50:00 AM	22.8	40
5/14/02	1:55:00 AM	23.6	50
5/14/02	2:00:00 AM	22.8	40
5/14/02	2:05:00 AM	23.2	45
5/14/02	2:10:00 AM	22.8	40
5/14/02	2:15:00 AM	23.6	50
5/14/02	2:20:00 AM	22.8	40
5/14/02	2:25:00 AM	23.2	45
5/14/02	2:30:00 AM	22.8	40
5/14/02	2:35:00 AM	23.6	50
5/14/02	2:40:00 AM	22.8	40
5/14/02	2:45:00 AM	23.2	45
5/14/02	2:50:00 AM	22.8	40
5/14/02	2:55:00 AM	23.6	50
5/14/02	3:00:00 AM	22.8	40
5/14/02	3:05:00 AM	23.2	45
5/14/02	3:10:00 AM	22.8	40
5/14/02	3:15:00 AM	23.6	50
5/14/02	3:20:00 AM	22.8	40
5/14/02	3:25:00 AM	23.2	45
5/14/02	3:30:00 AM	22.8	40
5/14/02	3:35:00 AM	23.6	50
5/14/02	3:40:00 AM	22.8	40
5/14/02	3:45:00 AM	23.2	45
5/14/02	3:50:00 AM	22.8	40
5/14/02	3:55:00 AM	23.6	50
5/14/02	4:00:00 AM	22.8	40
5/14/02	4:05:00 AM	23.2	45
5/14/02	4:10:00 AM	22.8	40
5/14/02	4:15:00 AM	23.6	50
5/14/02	4:20:00 AM	22.8	40
5/14/02	4:25:00 AM	23.2	45
5/14/02	4:30:00 AM	22.8	40
5/14/02	4:35:00 AM	23.6	50
5/14/02	4:40:00 AM	22.8	40
5/14/02	4:45:00 AM	23.2	45
5/14/02	4:50:00 AM	22.8	40
5/14/02	4:55:00 AM	23.6	50
5/14/02	5:00:00 AM	22.8	40
5/14/02	5:05:00 AM	23.2	45
5/14/02	5:10:00 AM	22.8	40
5/14/02	5:15:00 AM	23.6	50
5/14/02	5:20:00 AM	22.8	40
5/14/02	5:25:00 AM	23.2	45
5/14/02	5:30:00 AM	22.8	40
5/14/02	5:35:00 AM	23.6	50
5/14/02	5:40:00 AM	22.8	40
5/14/02	5:45:00 AM	23.2	45
5/14/02	5:50:00 AM	22.8	40
5/14/02	5:55:00 AM	23.6	50
5/14/02	6:00:00 AM	22.8	40
5/14/02	6:05:00 AM	23.2	45
5/14/02	6:10:00 AM	22.8	40
5/14/02	6:15:00 AM	23.6	50
5/14/02	6:20:00 AM	22.8	40
5/14/02	6:25:00 AM	23.2	45
5/14/02	6:30:00 AM	22.8	40
5/14/02	6:35:00 AM	23.6	50
5/14/02	6:40:00 AM	22.8	40
5/14/02	6:45:00 AM	23.2	45
5/14/02	6:50:00 AM	22.8	40
5/14/02	6:55:00 AM	23.6	50
5/14/02	7:00:00 AM	22.8	40
5/14/02	7:05:00 AM	23.2	45
5/14/02	7:10:00 AM	22.8	40
5/14/02	7:15:00 AM	23.6	50
5/14/02	7:20:00 AM	22.8	40
5/14/02	7:25:00 AM	23.2	45
5/14/02	7:30:00 AM	22.8	40
5/14/02	7:35:00 AM	23.6	50
5/14/02	7:40:00 AM	22.8	40
5/14/02	7:45:00 AM	23.2	45
5/14/02	7:50:00 AM	22.8	40
5/14/02	7:55:00 AM	23.6	50
5/14/02	8:00:00 AM	22.8	40



Veriteq Instruments, Inc.  
 #110 - 13799 Commerce Parkway  
 Richmond, BC Canada V6V 2N9  
 1-800-683-8374 Fax: (604) 273-2874  
[info@veriteq.com](mailto:info@veriteq.com) [www.veriteq.com](http://www.veriteq.com)