

# Veriteq VL-Series Data Loggers, vLog + USB Logger Cable Drivers

---

## Quick Start Guide

Veriteq's VL-series palm-sized precision humidity and temperature data logging system provides an easy-to-use and cost-effective method for validating temperature and humidity-sensitive equipment, systems, and processes in FDA/GMP pharmaceutical environments.



This Guide is designed to get you started with the VL system right away. It shows you how to install vLog software, the Veriteq USB Logger Cable and drivers (if needed), and points you to important information on setting up and using your Veriteq data loggers.

---

## System Requirements

Veriteq vLog + USB Logger Cable Drivers requires a PC with the following minimum configuration:

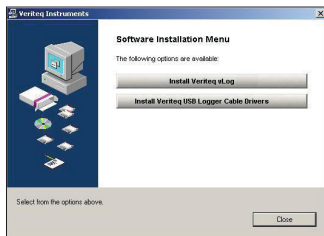
- 32-bit or 64-bit versions of: Windows® XP, Windows Server® 2003, Windows Vista®, Windows Server® 2008, Windows® 7.
- 32-bit Windows® 2000.
- CD-ROM drive



---

## Step 1 - Install vLog and USB Logger Cable Drivers

1. Ensure you have administrator privileges.
2. Start Windows®, log in as an administrator, and close all running applications. If you will be using the USB Logger Cable, *do not connect* the cable until necessary drivers have been installed.
3. Insert the installation CD. The Setup program begins automatically. (If your system does not automatically run CD-ROMs, click Start, then choose Run. If your CD-ROM drive is D, type d:\setup, then press Enter.)
4. From the Software Installation Menu, choose **Install Veriteq vLog**.
  1. Select the directory where you want the program installed. Click **Next**.
  2. Accept or edit the location of the Program Folder (where vLog appears in Start Menu), then click **Next**.
  3. Click **Finish**.
5. If you will be using the USB Logger Cable, from the Software Installation Menu, choose **Install USB Logger Cable Drivers**. Complete the installation. Click **Finish**.
6. From the Software Installation Menu, click **Close**.



---

## Step 2 - Connect the Data Logger to the PC

Connect your logger to your PC using either a Serial Logger Cable, a USB Logger Cable, a vNet or Digi device.



---

### Step 3 - Confirm the COM Port

Before you can communicate with your Veriteq data logger, you need to know the number of the COM port that has been allocated for the data logger.

To check which COM port has been allocated, open Windows Device Manager:

*Windows® 2000/XP*: Start>Settings>Control Panel>System>

Hardware> Device Manager

*Windows Server® 2003*: Start>Control Panel>System>Hardware>Device Manager

*Windows Server® 2008/Windows Vista®*: Start>Control Panel>System>Device Manager

*Windows® 7*: Start>Control Panel>Hardware and sound>Device Manager

Under Ports, note the COM port number that has been allocated.

.

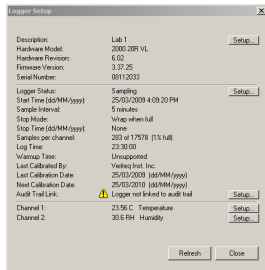
---

### Step 4 - Using vLog to Communicate with the Data Logger

1. Select **Start>Programs>Veriteq Instruments**, then choose vLog from the vLog program group.
2. The vLog security wizard opens. Click **Next**.
3. Enter the vLog security key you received with your package. Click **Next**.
4. Create a vLog administrator account. The user name and password you use for vLog must already exist on this PC.
5. Click **Next**.
6. Confirm the path for your audit trail file.
7. Click **Next**.



8. Select the Security level (applies to all accounts).
9. Click **Next**. The security wizard closes.
10. Review the *User's Guide*. Press **F1** or select **Help>User's Guide**.
11. From vLog, select **Tools>Options**, select the **General** tab, then choose the COM port allocated for the data logger.
12. From vLog, select **Logger>Setup**. If communication with the data logger is established, the Logger Setup screen appears. You can use the Setup buttons on the right of the screen to configure the data logger, or, if you want to transfer data from the logger before making any changes, proceed to the next step.



13. To transfer data from the data logger, from vLog, select **Logger>Transfer**. Follow the instructions in the Transfer Wizard. After the transfer is complete, you will be asked to insert the .spl file into the active graph file. The .spl file extension refers to a logger file.

Select **OK** to insert the file into the graph, then save using **File>Save**. The graph is saved as an .spg file. By default, both the .spg and the original .spl file are saved in your vLog folder in c:\Program Files\Veriteq Instruments.

---

## Customer Support

Veriteq, a Vaisala Company | 13775 Commerce Parkway | Richmond, BC | V6V 2V4 | Canada  
 customersupport@veriteq.com | www.veriteq.com | www.vaisala.com  
 1 800 683 8374 toll free | +1 604 273 6850

© 2010. All rights reserved. Veriteq and Veriteq vLog are trademarks of Veriteq Instruments.

Windows is a registered trademark of Microsoft Corporation.

Document part number: 880-0003-02

Release date: September 2010

Printed in Canada.

