

**1 HARDWARE**

- > Connect Digi device to power supply and Ethernet outlet
- > Connect data logger to Digi device using Veriteq cable

You're now ready to set up Digi drivers

**2 DIGI DRIVERS**

**A Obtain Static IP Address**

- > Obtain static IP address for Digi device from your IT department. If your networking policy requires you to reserve IP addresses using DHCP, see [www.veriteq.com/digi](http://www.veriteq.com/digi) for instructions.

**B Discover Digi Device**

- > Insert Digi CD into viewLinc Server (this can be any Windows PC or Server available 24/7).
- > Digi Device Setup Wizard launches automatically. Click NEXT.
- > Select device that matches MAC address on bottom of Digi device. Click NEXT.

**C Configure Digi Device**

- > In the Configure Network Settings screen, enter the Static IP address. Click NEXT two times.
- > In the Configure Real Port Settings screen, select "Install Digi Real Port on this computer". Click NEXT.
- > Click NEXT again. The settings are saved.
- > Click FINISH.

**NOTE:**  
This document shows the Digi One SP. For other Digi models, see [www.veriteq.com/digi](http://www.veriteq.com/digi) for instructions.

Repeat boxes 1 + 2 for all Digi devices. When done, turn over to install two software components >

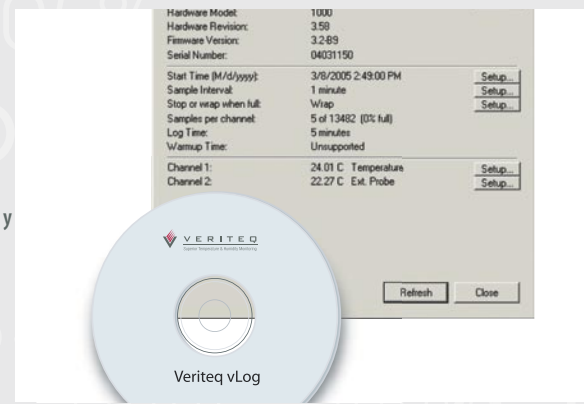
3

### VLOG SOFTWARE: Install vLog on viewLinc Server

vLog allows you to confirm the successful installation of the COM port, change the logger default name and graph historical data (see 6).

- > On viewLinc Server, from Windows Device Manager, identify which COM port your Digi device is using.
- > On viewLinc Server, insert vLog CD and install. The installer launches automatically.
- > Start vLog.
- > Choose Tools | Options and select the COM port you assigned to the Digi Real Port. Click OK.
- > Choose Logger | Setup. Seeing the logger screen (shown) confirms successful communication with logger.
- > To change the logger description to match its location, choose Logger | Description.
- > Close all open vLog dialog boxes.

See vLog Help (F1) for more. You can now close vLog.



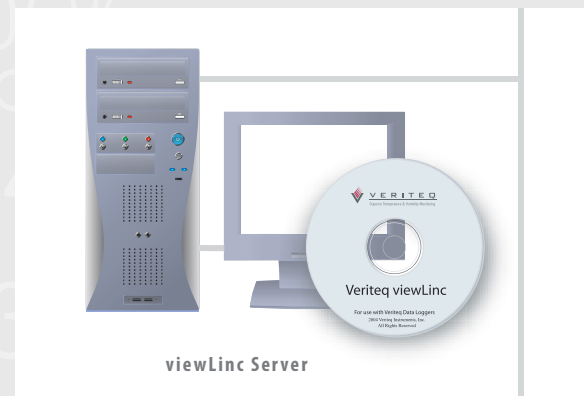
4

### VIEWLINC SOFTWARE: Install viewLinc on viewLinc Server

viewLinc "hosts" data loggers to make them available across the network.

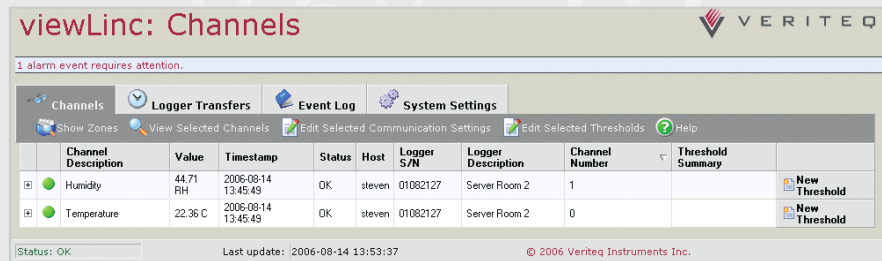
- > On viewLinc Server, insert viewLinc CD and install "complete installation".

You have installed viewLinc. You can now move to any machine on the network – or stay where you are – and use viewLinc to see data from your logger.



5

### VIEWLINC: Monitoring & Alarming



#### A Log into viewLinc

- > From any computer on the network, in the address box of an Internet browser, enter the computer name where viewLinc is installed: ex. `http://<computername>`.
- > In the log-in screen, enter "admin" (username) and no password. Click Login.
- > viewLinc appears, showing available channels. Select the check box next to the channel you want to monitor. Data appears under My Channels.

Congratulations - You're seeing your logger in action!

#### B Configure viewLinc

- > Create User Accounts
  - allows non-admin users to log in and monitor channels
- > Configure Mail Server Settings
  - enables viewLinc to send alarm emails to individuals / distribution lists
- > Set Threshold and Communication Alarms
  - sets thresholds that trigger alarms

For help, see the Administrator Guide or online help

**Congratulations – Installation and essential configuration are complete!**

6

### NEXT STEPS > HISTORICAL DATA

#### A Enable Automatic Downloading with viewLinc

- > In viewLinc, click Logger Transfers to set transfer frequency, destination, and filename format for historical .spl files. We recommend the files are stored on the viewLinc Server.

#### B Graph Historical Data with vLog

- > Install vLog on PC(s) where you want to display graphs.
- > In vLog, create graph: choose File | Insert Logger Files and point to .spl file in folder from step A.
- > Choose Format | Time Scale to set start and end time.
- > To save graphs, choose File | Save. Filenames end with .spg.
- > To see logger data in tabular form, choose View | Logger Files.

