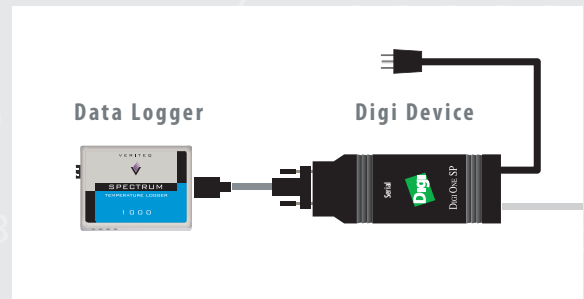


1

HARDWARE

- > Connect Digi device to power supply and Ethernet outlet
- > Connect data logger to Digi device using Veriteq cable



You're now ready to set up Digi drivers. Turn over >

NOTE:

This document shows the Digi One SP. For other Digi models, see www.veriteq.com/digi for instructions.

DIGI DRIVERS**A Obtain Static IP Address**

- > Obtain static IP address for Digi device from your IT department. If your networking policy requires you to reserve IP addresses using DHCP, see www.veriteq.com/digi for instructions.

B Discover Digi Device

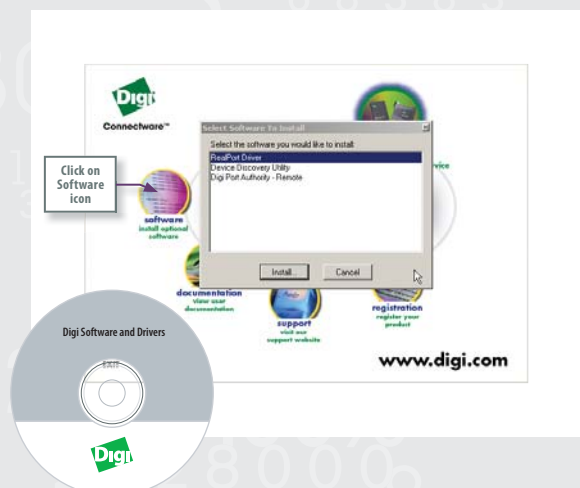
- > Insert Digi CD into viewLinc Server (this can be any Windows PC or Server available 24/7).
- > Digi Device Setup Wizard launches automatically. Click NEXT.
- > Select device that matches MAC address on bottom of Digi device. Click NEXT.

C Configure Digi Device

- > In the Configure Network Settings screen, enter the Static IP address. Click NEXT.
- > Click NEXT 3 more times. The settings are saved.
- > Click FINISH.

D Install Digi Real Port Driver

- > From the Digi Device Servers screen, click SOFTWARE.
- > Install Real Port Driver.
- > From the Digi Real Port Setup Wizard Welcome screen, click NEXT.
- > Select your device. Click NEXT.
- > From the Digi Real Port Setup Wizard, choose a COM port for the computer to use to talk to the Digi. **Use COM 10 or higher to avoid conflicts.** Make a note of this COM port.
- > Click NEXT. Click FINISH.



You're now ready to install two software components.

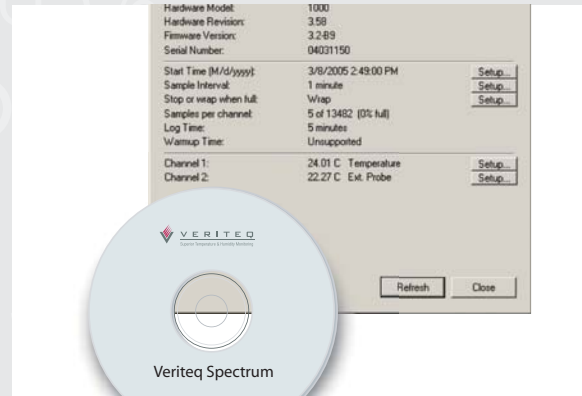
3

SPECTRUM SOFTWARE: Install Spectrum on viewLinc Server

Spectrum allows you to confirm the successful installation of the COM port, change the logger default name and graph historical data (see 6).

- > On viewLinc Server, insert Spectrum CD and install. The installer launches automatically.
- > Start Spectrum.
- > Choose Tools | Options and select the COM port you assigned to the Digi Real Port. Click OK.
- > Choose Logger | Setup. Seeing the logger screen (shown) confirms successful communication with logger.
- > Choose Logger | Description to change the logger description to match its location.
- > Set the logger's sample interval to an appropriate frequency for your historical data recording needs, or leave at default setting of once every 5 minutes. Choose Logger>Sample Timing to make changes
- > Close all open Spectrum dialog boxes.

See Spectrum Help (F1) for more. You can now close Spectrum.



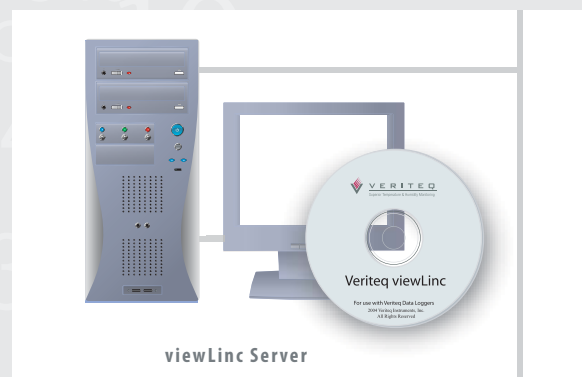
4

VIEWLINC SOFTWARE: Install viewLinc on viewLinc Server

viewLinc "hosts" data loggers to make them available across the network.

- > On viewLinc Server, insert viewLinc CD and install "complete installation".

You have installed viewLinc. You can now move to any machine on the network – or stay where you are – and use viewLinc to see data from your logger.

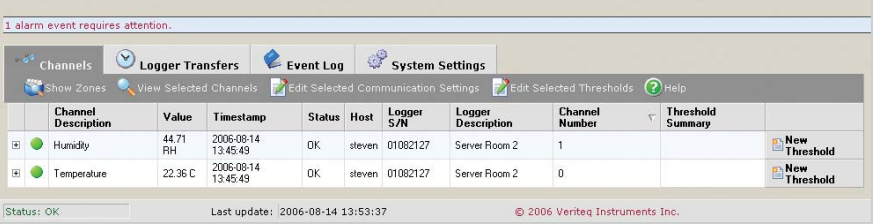


5

VIEWLINC: Monitoring & Alarming



viewLinc: Channels



A Log into viewLinc

- > From any computer on the network, in the address box of an Internet browser, enter the computer name where viewLinc is installed: ex. `http://<computername>`.
- > In the log-in screen, enter "admin" (username) and no password. Click Login.
- > viewLinc appears, showing available channels. Select the check box next to the channel you want to monitor. Data appears under My Channels.

Congratulations - You're seeing your logger in action!

B Configure viewLinc

- > Create User Accounts
 - allows non-admin users to log in and monitor channels
- > Configure Mail Server Settings
 - enables viewLinc to send alarm emails to individuals / distribution lists
- > Set Threshold and Communication Alarms
 - sets thresholds that trigger alarms

For help, see the Administrator Guide or online help

Congratulations – Installation and essential configuration are complete!

6

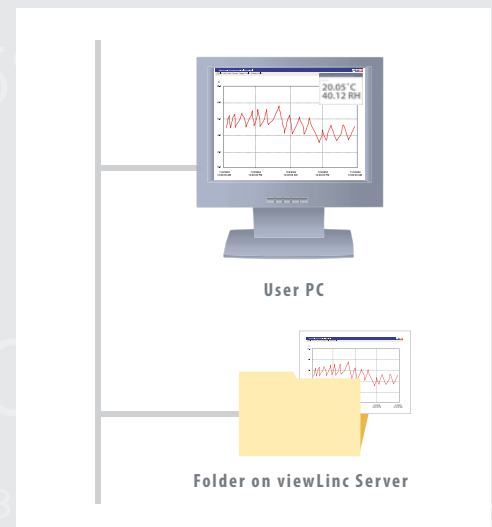
NEXT STEPS > HISTORICAL DATA

A Enable Automatic Downloading with viewLinc

- > In viewLinc, click Logger Transfers to set transfer frequency, destination, and filename format for historical .spl files. We recommend the files are stored on the viewLinc Server.

B Graph Historical Data with Spectrum

- > Install Spectrum on PC(s) where you want to display graphs.
- > In Spectrum, create graph: choose File | Insert Logger Files and point to .spl file in folder from step A.
- > Choose Format | Time Scale to set start and end time.
- > To save graphs, choose File | Save. Filenames end with .spg.
- > To see logger data in tabular form, choose View | Logger Files.



VERITEQ INSTRUMENTS, INC.

110, 13799 Commerce Parkway, Richmond, BC, Canada, V6V 2N9

Tel 1 800 683 8374 Fax 604 273 2874

www.veriteq.com