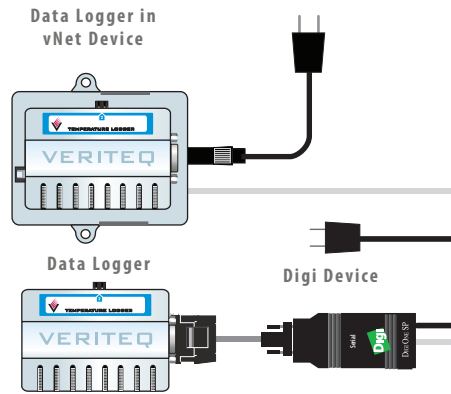


- 1 HARDWARE**
- > Veriteq Data logger
  - > vNet device or, Digi device and Veriteq Digi Cable

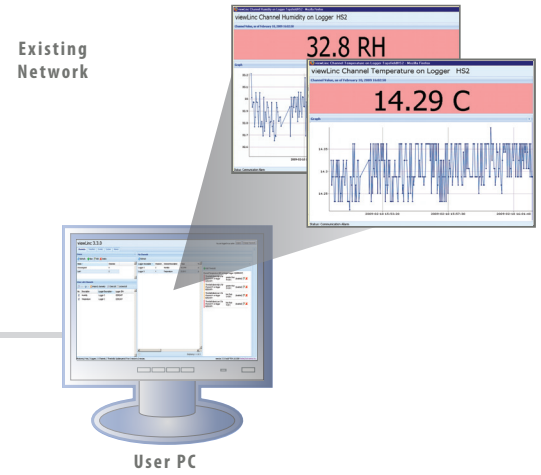


- 2 DEVICE DRIVERS**
- > vNet or Digi configuration CD



- 3 VLOG or SPECTRUM SOFTWARE**
- > CD for logger setup

- 4 VIEWLINC SOFTWARE**
- > viewLinc CD
  - > for real time monitoring, alarming, automated downloading, graphing and historical reporting



- 5 VIEWLINC: MONITORING, ALARMING & REAL TIME GRAPHING**
- > any machine on network with Internet browser

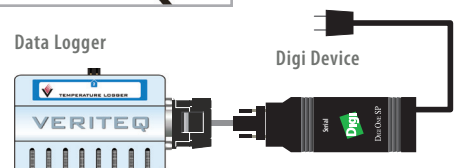
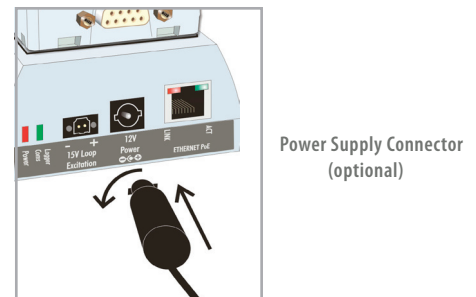
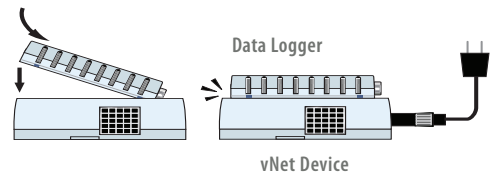
**1 HARDWARE: vNet or Digi**

**vNET DEVICE:**

- > Remove protective label on back of logger.
- > Connect data logger to vNet device.
- > Connect vNet device to Ethernet outlet.
- > If Power over Ethernet is not available, plug in power supply\*.

**DIGI DEVICE:**

- > Connect Digi device to power supply and Ethernet outlet.
- > Connect data logger to Digi device using Veriteq cable.



## 2

### DEVICE DRIVERS

#### A Obtain Static IP Address

- > Obtain static IP address for device from your IT department. If your networking policy requires you to reserve IP addresses using DHCP, see [www.veriteq.com/digi](http://www.veriteq.com/digi) for instructions.

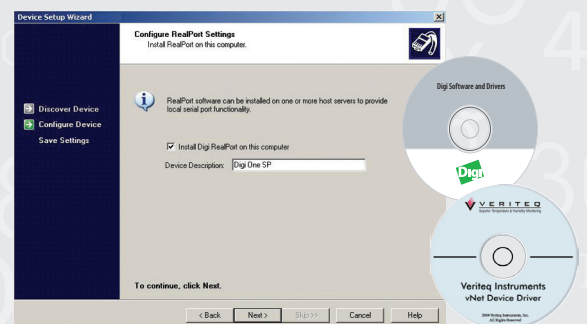
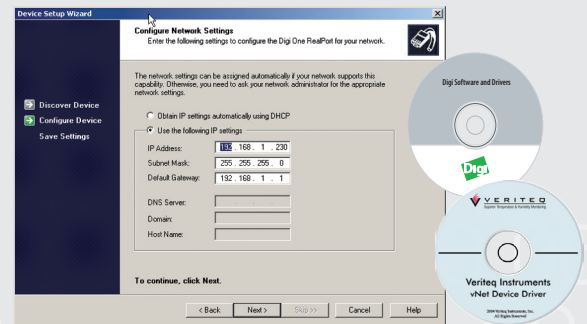
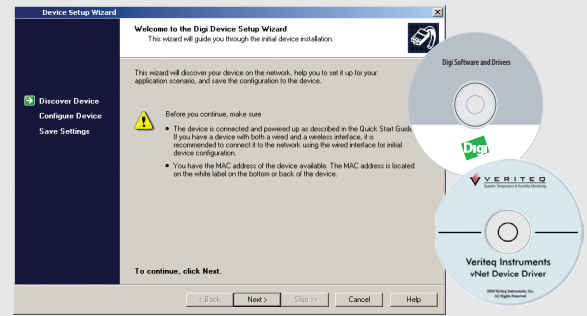
#### B Discover Device

- > Insert Device Driver CD into viewLinc Server (this can be any Windows PC or Server available 24/7).
- > Device Setup Wizard launches automatically. Click NEXT.
- > Select device that matches MAC address on side or bottom of device. Click NEXT.

#### C Configure Digi Device

- > In the Configure Network Settings screen, enter the Static IP address. Click NEXT two times.
- > In the Configure Real Port Settings screen, select "Install Real Port on this computer". Click NEXT.
- > Click NEXT again. The settings are saved.
- > Click FINISH.

#### D Repeat steps 1 + 2 for all devices. When done, complete steps 3, 4, + 5



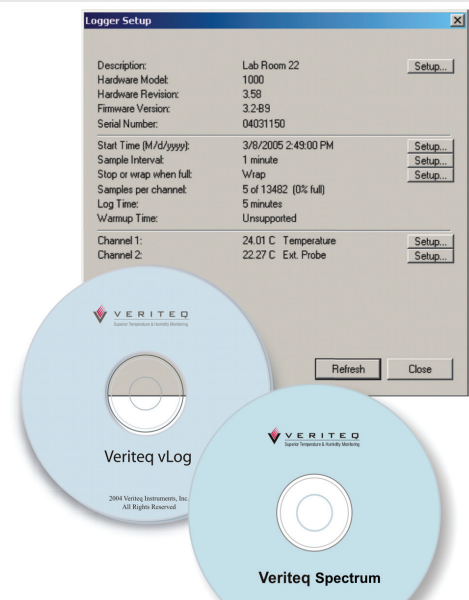
**NOTE:** This document shows the vNet and Digi One SP devices. For other Digi models, see [www.veriteq.com/digi](http://www.veriteq.com/digi) for instructions.

## 3

### VLOG or SPECTRUM SOFTWARE: Install vLog or Spectrum on ViewLinc Server

Your system includes either vLog or Spectrum software which allows you to confirm the successful installation of the COM port and change the logger settings.

- > On viewLinc Server, from Windows Device Manager, identify which COM port your device is using.
- > On viewLinc Server, insert vLog or Spectrum CD and install. The installer launches automatically.
- > Start vLog or Spectrum.
- > Choose Tools | Options and select the COM port you assigned to the RealPort. Click OK.
- > Choose Logger | Setup. Seeing the logger screen (shown) confirms successful communication with logger.
- > Choose Logger | Description to change the logger description to match its location.



## VLOG or SPECTRUM SOFTWARE: Install vLog or Spectrum on viewLinc Server cont'd

- > Set the logger's sample interval to an appropriate frequency for your historical data recording needs, or leave at default setting of once every 5 minutes. Choose Logger | Sample Timing to make changes.
- > Close all open vLog or Spectrum dialog boxes.

See Help (F1) for more. You can now close vLog or Spectrum.

## 4

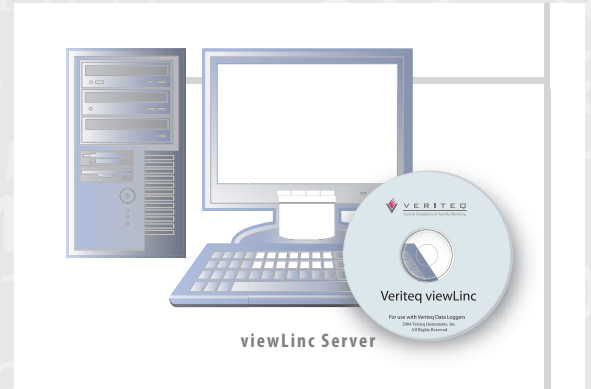
### VIEWLINC SOFTWARE: Install viewLinc on viewLinc Server

viewLinc "hosts" data loggers to make them available across the network.

- > On viewLinc Server, insert viewLinc CD and install viewLinc.
- > Be sure to select Enterprise Server when prompted.

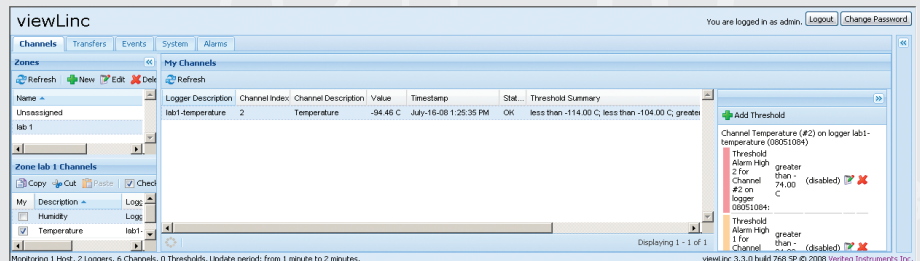
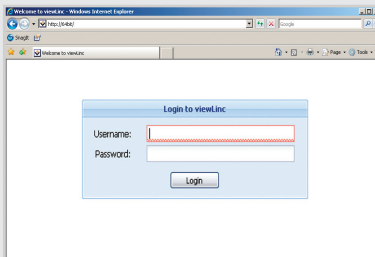
You have installed viewLinc. You can now move to any machine on the network – or stay where you are – and use viewLinc to see data from your logger.

See the Administrator Guide for help setting up one or more host servers.



## 5

### VIEWLINC: Monitoring, Alarming & Viewing Historical Data



#### A Log into viewLinc

- > From any computer on the network, in the address box of an Internet browser, enter the computer name where viewLinc is installed: ex. `http://<computername>`.
- > In the Login screen, enter "admin" (username) and "admin" (password). Click Login.
- > viewLinc appears, showing available channels. Select a zone then select the check box next to the channel you want to monitor. Data appears under My Channels.

Congratulations - You're seeing your logger in action!

#### B Configure viewLinc

- > Create User Accounts
  - allows non-admin users to log in and monitor channels
- > Configure Mail Server Settings
  - enables viewLinc to send alarm emails to individuals / distribution lists
- > Set Threshold and Communication Alarms
  - sets thresholds that trigger alarms